



70.0 Curlew House, London, E14 0YA
£450 Per week



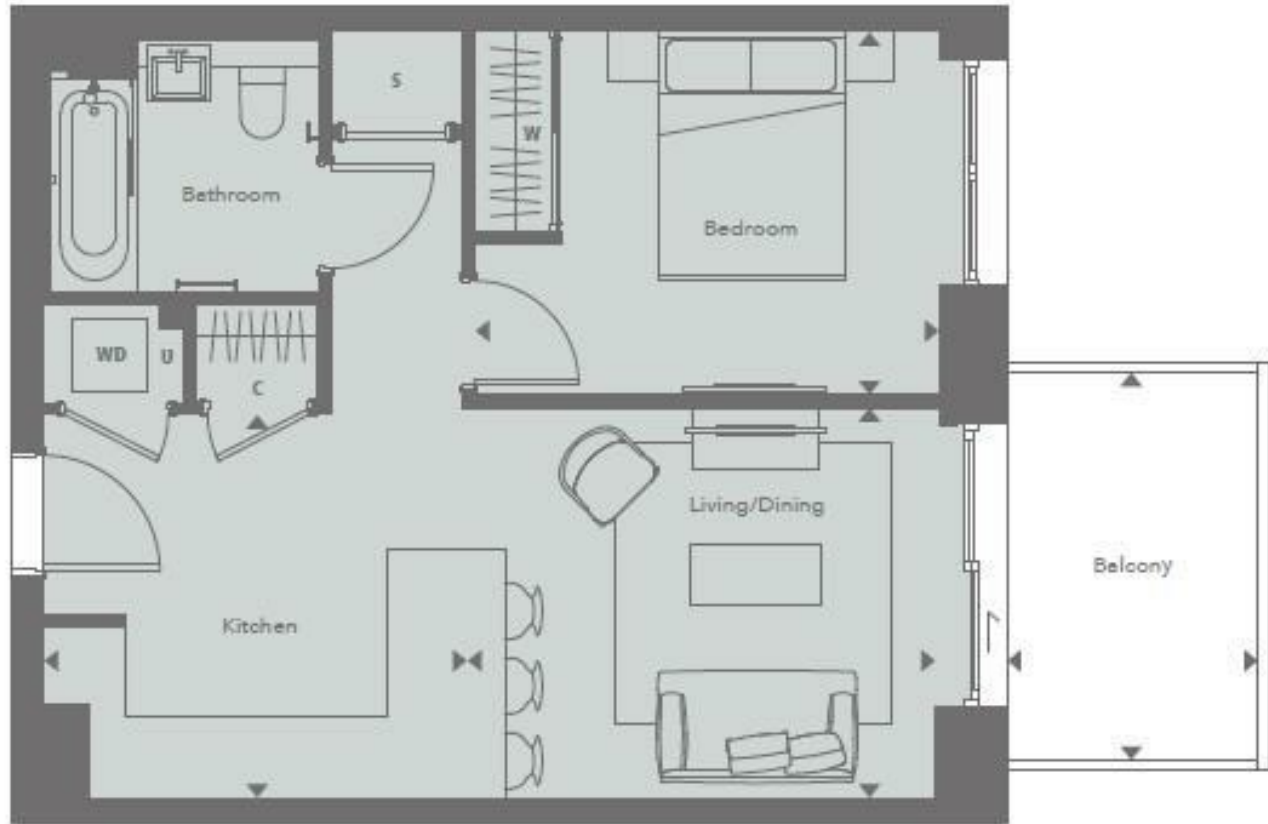
A beautiful contemporary, one-bedroom apartment in the sought-after Poplar Riverside development by Berkeley Group! Photos have been digitally staged of a similar apartment in the development. The property comprises of living space, modern open plan kitchen and living area, luxury bathroom, great storage, double bedroom and boasts a 64sq.ft balcony. Photos are of a similar property in the development.

Located in Zone 2, on the banks of the River Lea just 1.7 miles from Canary Wharf. On foot, within 0.5 miles, 4 DLR stations - Langdon Park, East India, All Saints and Canning Town DLR/ Underground station. By bike, Canary Wharf can be reached in 12 minutes and Stratford in 16 minutes

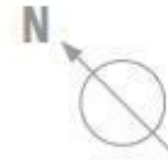
Furnished | Available now
12 Month Minimum Term
5 Week Security Deposit
Council tax band : Tower Hamlets - Rate not yet available
Change of contract fee: £50 including VAT



1 BEDROOM SUITE



Internal measurements	44.7 sq m	481.1 sq ft
External measurements	6.0 sq m	64.5 sq ft



Energy Efficiency Rating		
	Current	Potential
Very energy efficient - lower running costs		
(92 plus) A		
(81-91) B	84	84
(69-80) C		
(55-68) D		
(39-54) E		
(21-38) F		
(1-20) G		
Not energy efficient - higher running costs		
England & Wales		EU Directive 2002/91/EC

These particulars, whilst believed to be accurate are set out as a general outline only for guidance and do not constitute any part of an offer or contract. Intending purchasers should not rely on them as statements of representation of fact, but must satisfy themselves by inspection or otherwise as to their accuracy. No person in this firms employment has the authority to make or give any representation or warranty in respect of the property.